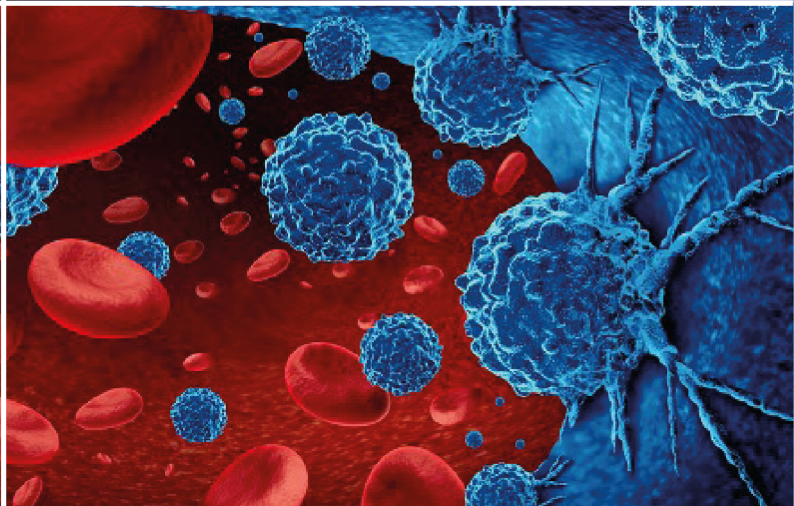
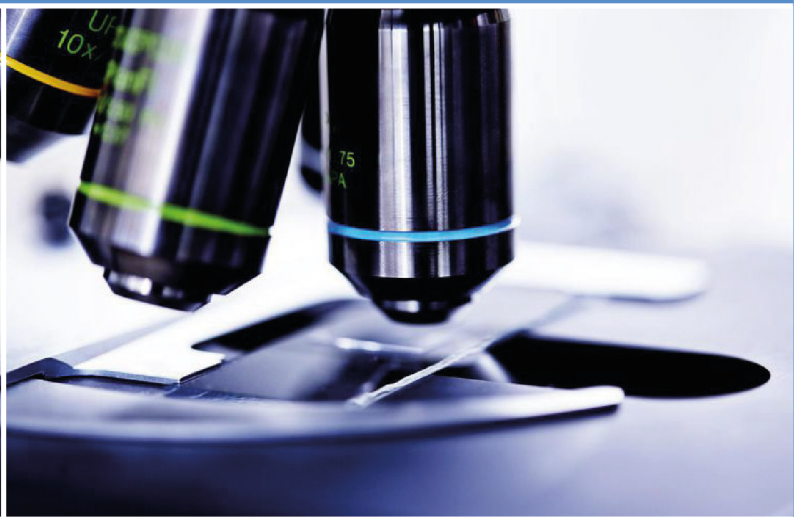
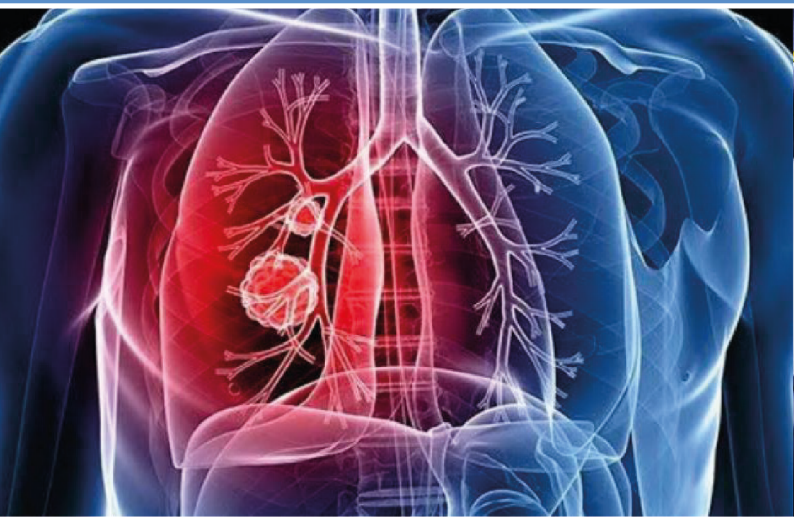


JCHOR

Journal of Current Hematology & Oncology Research



Volume: 2

Issue: 2

Year: 2024

EDITORS-IN-CHIEF

Prof. İlhami BERBER

Division of Hematology & Bone Marrow Transplant Unit, Department of Internal Medicine, Faculty of Medicine, İnönü University, Malatya, Türkiye

Assoc. Prof. Serhat ÇELİK

Department of Hematology, Yıldırım Beyazıt University Yenimahalle Training and Research Hospital, Ankara, Türkiye

ASSOCIATE EDITORS-IN-CHIEF

Assoc. Prof. Ali DOĞAN

Division of Hematology, Department of Internal Medicine, Faculty of Medicine, Van Yüzüncü Yıl University, Van, Türkiye

Assoc. Prof. Fatih DEMİRCİOĞLU

Department of Radiation Oncology, İstanbul Okan University Hospital, İstanbul, Türkiye

EDITORIAL BOARD

Assoc. Prof. Abdülkadir BAŞTÜRK

Department of Medical Oncology, Medical Park Elazığ Hospital, Elazığ, Türkiye

Prof. Abdullah BÖYÜK

Department of General Surgery, Medical Park Elazığ Hospital, Elazığ, Türkiye

Assoc. Prof. Ahmet SARICI

Department of Hematology, Malatya Training and Research Hospital, Malatya, Türkiye

Prof. Ali KUTLUCAN

Division of Hematology, Department of Internal Medicine, Faculty of Medicine, Başkent University, İzmir, Türkiye

Prof. Alpaslan TANOĞLU

Department of Gastroenterology, Medical Park Göztepe Hospital Complex, Faculty of Medicine, Bahçeşehir University, İstanbul, Türkiye

Assist. Prof. Aşkı VURAL

Department of Internal Medicine, Faculty of Medicine, Adıyaman University, Adıyaman, Türkiye

Spec. Ayşe Hilal EROĞLU KÜÇÜKDİLER, MD

Division of Hematology, Department of Internal Medicine, Faculty of Medicine, Aydın Adnan Menderes University, Aydın, Türkiye

Spec. Aysun YIKILMAZ, MD

Department of Hematology, Denizli State Hospital, Denizli, Türkiye

Assoc. Prof. Baran AKAGÜNDÜZ

Division of Medical Oncology, Department of Internal Medicine, Faculty of Medicine, Erzincan Binali Yıldırım University, Erzincan, Türkiye

Assoc. Prof. Birol YILDIZ

Department of Medical Oncology, Medical Park Elazığ Hospital, Elazığ, Türkiye

Prof. Burhan Hakan KANAT

Department of General Surgery, Malatya Training and Research Hospital, Malatya, Türkiye

Spec. Cem SELİM, MD

Department of Hematology, Mehmet Akif İnan Training and Research Hospital, Şanlıurfa, Türkiye

Prof. Cengiz DEMİR

Department of Hematology, Gazi Yaşargil Training and Research Hospital, Diyarbakır, Türkiye

Assoc. Prof. Cihan URAL

Division of Hematology, Department of Internal Medicine, Faculty of Medicine, Van Yüzüncü Yıl University, Van, Türkiye

Spec. Deniz Can GÜVEN, MD

Department of Medical Oncology, Elazığ City Hospital, Elazığ, Türkiye

Prof. Doğan UNCU

Department of Medical Oncology, Ankara Bilkent City Hospital, Ankara, Türkiye

Assoc. Prof. Doğukan YILDIRIM

Department of Gynecological Oncology, Private Elazığ Hayat Hospital, Elazığ, Türkiye

Spec. Ekin KIRCALI, MD

Department of Hematology and Bone Marrow Transplantation, Medicana International Ankara Hospital, Ankara, Türkiye

Assoc. Prof. Fatih ERBAY

Department of Radiology, Faculty of Medicine, İnönü University, Malatya, Türkiye

Prof. Fevzi ALTUNTAŞ

Department of Hematology & Bone Marrow Transplant Unit, Ankara Oncology Training and Research Hospital, Faculty of Medicine, Yıldırım Beyazıt University, Ankara, Türkiye

Prof. Gökhan ERDEM

Department of Medical Oncology, Liv Hospital Ankara, Ankara, Türkiye

Prof. Hakan ARTAŞ

Division of Interventional Radiology, Department of Radiology, Faculty of Medicine, Fırat University, Elazığ, Türkiye

Prof. İsmail ERTÜRK

Department of Medical Oncology, Gülhane Training and Research Hospital, University of Health Sciences, Ankara, Türkiye

Prof. İtir DEMİRİZ

Department of Hematology & Bone Marrow Transplant Unit, Private Şişli Kolan Hospital, İstanbul, Türkiye

Prof. Mehmet Ali ERKURT

Division of Hematology, Department of Internal Medicine, Faculty of Medicine, İnönü University, Malatya, Türkiye

Prof. Mehmet Ali ERDOĞAN

Division of Gastroenterology, Department of Internal Medicine, Faculty of Medicine, İnönü University, Malatya, Türkiye

Prof. Mehmet Ali Nahit ŞENDUR

Division of Medical Oncology, Department of Internal Medicine, Faculty of Medicine, Yıldırım Beyazıt University, Ankara, Türkiye

Prof. Mehmet Sinan DAL

Department of Hematology & Bone Marrow Transplant Unit, Ankara Oncology Training and Research Hospital, University of Health Sciences, Ankara, Türkiye

Assoc. Prof. Musa Barış AYKAN

Department of Medical Oncology, Gülhane Training and Research Hospital, University of Health Sciences, Ankara, Türkiye

Assoc. Prof. Nurcan KIRICI BERBER

Department of Chest Diseases, Faculty of Medicine, Malatya Turgut Özal University, Malatya, Türkiye

Prof. Nuri KARADURMUŞ

Department of Medical Oncology, Gülhane Training and Research Hospital, University of Health Sciences, Ankara, Türkiye

Assoc. Prof. Osman KARA

Department of Hematology, Medicana International Ataşehir Hospital, İstanbul, Türkiye

Assoc. Prof. Özgen ARSLAN SOLMAZ

Department of Medical Pathology, Elazığ City Hospital, Elazığ, Türkiye

Assoc. Prof. Öztun TEMELLİ

Department of Radiation Oncology, Faculty of Medicine, İnönü University, Malatya, Türkiye

Prof. Ramazan ESEN

Division of Hematology & Medical Oncology, Department of Internal Medicine, Faculty of Medicine, Van Yüzüncü Yıl University, Van, Türkiye

Prof. Ramazan ACAR

Department of Medical Oncology, Mersin City Hospital, Mersin, Türkiye

Assoc. Prof. Saadet ALAN

Department of Medical Pathology, Faculty of Medicine, İnönü University, Malatya, Türkiye

Prof. Sadettin KILIÇKAP

Department of Medical Oncology, Liv Hospital Ankara, Ankara, Türkiye

Spec. Samet YAMAN, MD

Department of Hematology, Hitit University Erol Olçok Training and Research Hospital, Çorum, Türkiye

Assoc. Prof. Selim YALÇIN

Division of Medical Oncology, Department of Internal Medicine, Faculty of Medicine, Kırıkkale University, Kırıkkale, Türkiye

Prof. Serdal KORKMAZ

Department of Hematology, Kayseri City Hospital, Kayseri, Türkiye

Prof. Serhat AKIN

Division of Medical Oncology, Department of Internal Medicine, Faculty of Medicine, Hacettepe University, Ankara, Türkiye

Spec. Serkan GÜVEN, MD

Department of Hematology, Çanakkale Mehmet Akif Ersoy State Hospital, Çanakkale, Türkiye

Assoc. Prof. Sinan DEMİRCİOĞLU

Division of Hematology, Department of Internal Medicine, Meram Medical Faculty, Necmettin Erbakan University, Konya, Türkiye

Spec. Soykan BİÇİM, MD

Division of Hematology, Department of Internal Medicine, Faculty of Medicine, İnönü University, Malatya, Türkiye

Prof. Tamer ELKIRAN

Division of Medical Oncology, Department of Internal Medicine, Faculty of Medicine, İnönü University, Malatya, Türkiye

Assoc. Prof. Tayfun KERMENLİ

Department of Thoracic Surgery, Medical Park Elazığ Hospital, Elazığ, Türkiye

Assoc. Prof. Tuğçe Nur YİĞENOĞLU

Department of Hematology & Bone Marrow Transplant Unit, Ankara Onkoloji Training and Research Hospital, University of Health Sciences, Ankara, Türkiye

Prof. Yasin Furkan AGIN

Division of Gastroenterology, Department of Internal Medicine, Faculty of Medicine, İnönü University, Malatya, Türkiye

Assoc. Prof. Zehra BOZDAĞ

Department of Medical Pathology, Faculty of Medicine, İnönü University, Malatya, Türkiye

Spec. Zeynep Tuğba GÜVEN, MD

Department of Hematology, Adana City Hospital, Adana, Türkiye

ENGLISH LANGUAGE EDITOR

Assoc. Prof. Esra Güzel TANOĞLU

Department of Molecular Biology and Genetics, Institute of Health Sciences, University of Health Sciences, İstanbul, Türkiye

STATISTICS EDITOR

Assoc. Prof. Turgut KÜLTÜR

Department of Physical Therapy and Rehabilitasyon, Faculty of Medicine, Kırıkkale University, Kırıkkale, Türkiye

Volume: 2 Issue: 2 Year: 2024

ORIGINAL ARTICLES

- Determination of the therapeutic effects of apigenin on chronic myeloid leukemia stem cells; a mechanistic approach.....24-27
Ünal A, Göktepe Ö, Çetinkaya M, Baran Y.
- Retrospective evaluation of indications for therapeutic plasmapheresis procedures applied in our center.....28-32
Eryıldız Yücel S, Kuku İ, Kaya E, Erkurt MA, Berber İ.
- Evaluation of the relationship between immunohistochemical markers and the prognosis of patients with hepatocellular carcinoma..... 33-40
Kuzucular E, Doran F.
- Does early granulocyte colony-stimulating factor administration in autologous peripheral blood stem cell transplantation shorten the duration of hospitalization in patients with multiple myeloma? 41-46
Keklik M, Topal L, Çelik S, Kaynar L.

REVIEW

- Superior vena cava syndrome.....47-50
Hacıömeroğlu A, Yalçın S.

CASE REPORT

- A rare blood transfusion complication: *Bacillus thermoamylovorans* bacteremia and diffuse pustular rash51-53
Çayıröz K, Tokatlı M, Narlı P, et al.